

HOW TO SHUT OFF YOUR NATURAL GAS METER AND WATER METER IN A NATURAL DISASTER

GAS SHUTOFF:

After a natural disaster, such as an earthquake and help is not immediate, **TURN OFF** your gas whether or not you hear gas escaping, see damage to a gas line, or smell gas.

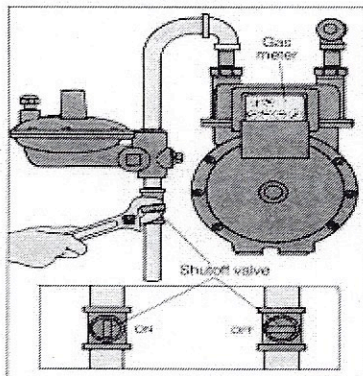
When you turn the gas off, **LEAVE IT OFF**, and call Northwest Natural Gas at 800-882-3377. Do not turn it back on yourself. Appliances and natural gas lines will need to be checked for possible damage before service can be safely restored.

Follow the procedure below to shut off a gas meter:

1. Locate shutoff valve.
2. Use a crescent wrench to turn valve ¼ turn in either direction.
3. Valve head is off when perpendicular (crosswise) to the pipe.

Note: Shutoff valve may be very low or at ground level on the incoming gas line.

GAS SHUTOFF VALVE



WATER METER AND SHUTOFF VALVE

The **WATER METER AND SHUTOFF VALVE** are both located inside the meter box. (You may also have a shutoff valve in your basement or garage.) To shut off your water with the shutoff valve in the meter box, use an adjustable wrench to turn the valve **CLOCKWISE**.

